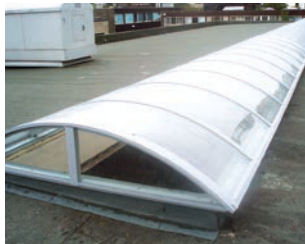


Barrel Vaults

NBS SPECIFICATIONS

The Barrel Vault is a curved rooflight. The height of which is $\frac{1}{5}$ th the span of the rooflight. They are generally supplied in double or triple glazed polycarbonate.

However, if no thermal performance is required i.e. in a walkway, then single glazed polycarbonate can be supplied.



'SOLUS' ROOFLIGHT

TYPE	Barrel vault rooflight low rise (rise in centre 1/5 of kerb width).
FRAME	Aluminium, aluminium to BS 1474:1987 Alloy 6063-T6.
FINISH	Polyester powder coated to BS 6496 Interpon D36 range. 25 Year life expectancy on powder coating.
COLOUR	RAL 9010 white matt or any standard RAL colour.
KERB	Structural kerb by others to take imposed loads. Minimum 100mm wide x 150mm high above finished roof level.
GLAZING	3mm UV coated polycarbonate inner skin, 3mm or 4mm UV coated polycarbonate outer. The glazing is Makrolon Mono Longlife UV resistant polycarbonate sheet. 10 Year warranty on breakage, excessive yellowing and loss of light transmission. Fire Rating: Makrolon 2099 when tested to BS 476 Part 3 is rated AA surface spread of flame to BS 476 Part 7 Class 1. Class O material to Building Regulation 1985. TP(a) rigid classification as described in approved Document B of Building Regulation 1991.
FRAGILITY	They have been tested and are classed as NON FRAGILE Class B. To ACR(M)001:2005 Test for Fragility of Roofing Assemblies.
'U' VALUE	Double skin 2.7 W/m ² K. Triple skin 1.7 W/m ² K. Multisheet <1.6 W/m ² K.
COLOUR	Clear – light transmission 90% Opal – light transmission 60%.
SIZES	To suit your kerb size.
FIXING	In accordance with Lareine Engineering fixing recommendations.

Other details and options upon request.



LAREINE ENGINEERING LTD

Unit 1, Armadale Industrial Estate,
Armadale, West Lothian,
Scotland, EH48 2ND

Tel: 01501 731600/731699

Fax: 01501 733828

E-mail: info@lareineengineering.com

Web: www.lareineengineering.com

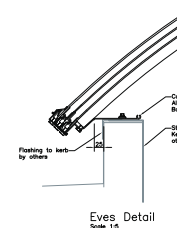
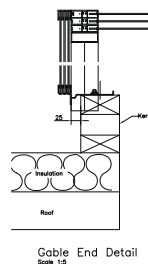
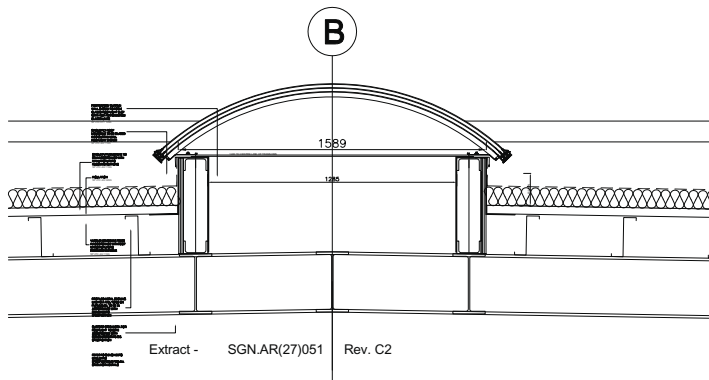
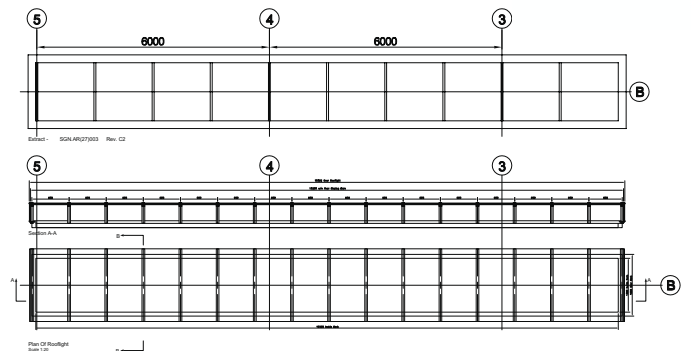
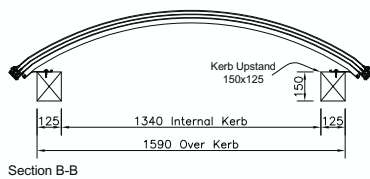
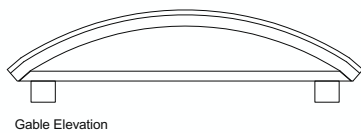
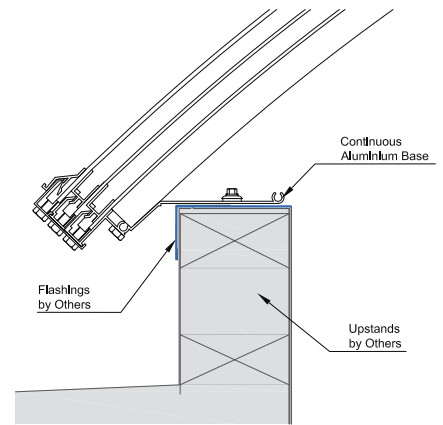
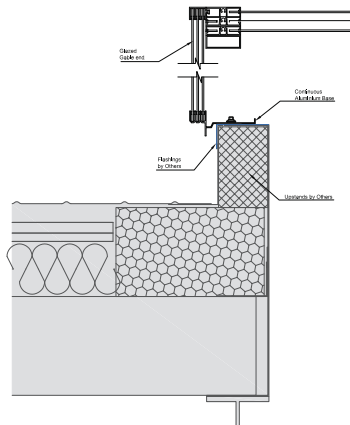


All Rooflights have been tested at BRE and are manufactured to: BS EN 6375-1:2009 Weather Tightness; BS EN 1026 / 12207:2000 Air Permeability; BS EN 1873 / 12208:2000 Water Tightness; BS EN 12210:2000 Wind Resistance; BS EN 1991-1 Snow Load; BS EN ISO 140 Acoustic; BS EN 1627-1630 Security.

Barrel Vaults

FIXING DETAILS

The following diagrams show typical Barrel Vault fixing details. Other details upon request.



Extract - SGN.AR(27)051 Rev. C2

Gable End Detail Scale 1:5

Eaves Detail Scale 1:5